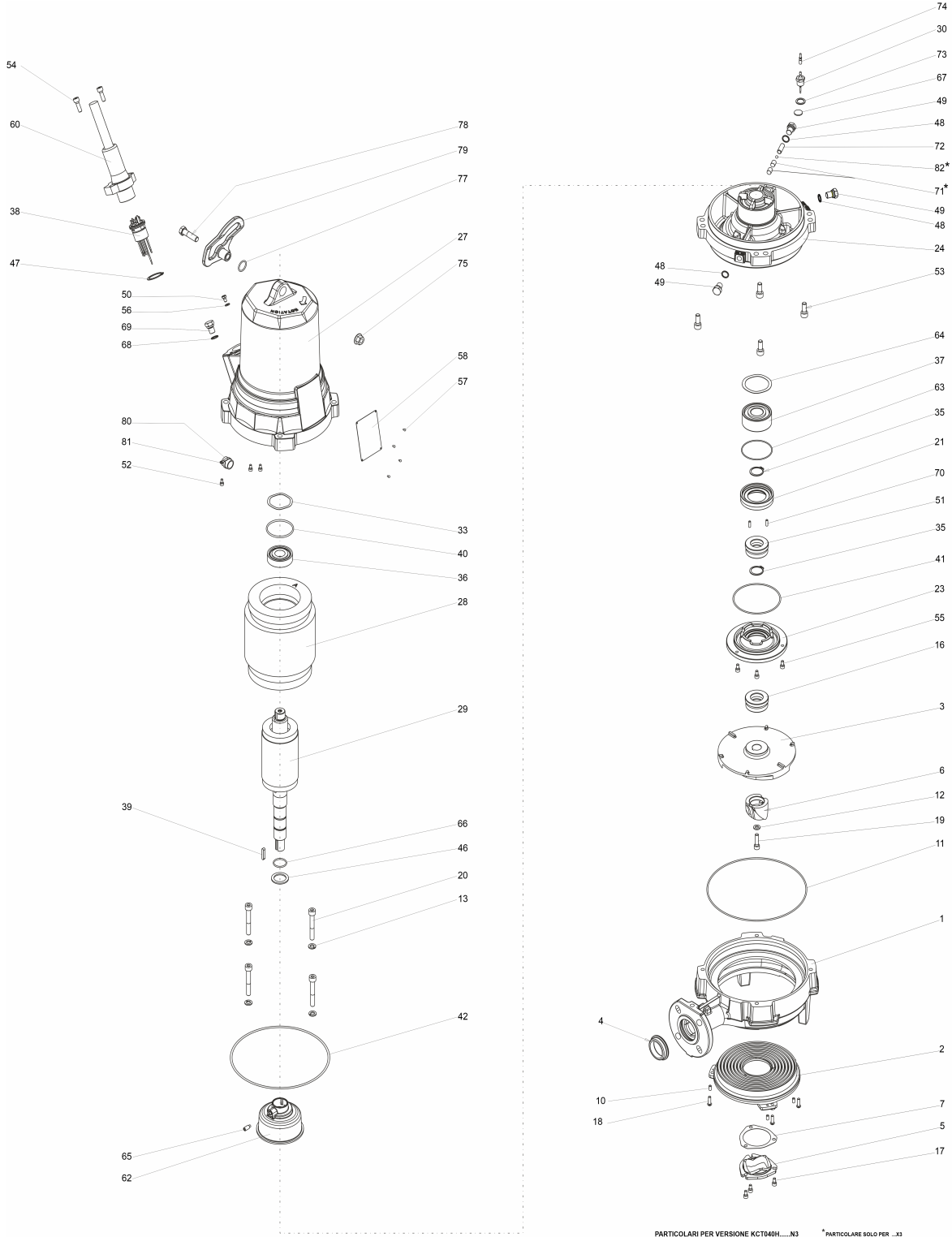


CAPRARI S.p.A

41123 MODENA (ITALY) - VIA EMILIA OVEST, 900
 Tel. +39 059897611 - Fax +39 059 897897
 email: info@caprari.it - www.caprari.com



864108 - KCT040HA+006522N3 EFFLUENT SUBMERSIBLE PUMP



PARTICOLARI PER VERSIONE KCT040H...N3
 FOR KCT040H...N3 VERSION
 POUR LA VERSION KCT040H...N3
 PARA LA VERSION KCT040H...N3

* PARTICOLARE SOLO PER ...N3
 COMPONENT ONLY FOR ...N3
 COMPONENT SEUL POUR ...N3
 SOLO POR ELECUCION ...N3

4934

COMPONENTS LIST

Pos.	Code	Serial N°	Description	Qty
------	------	-----------	-------------	-----

	660231	KT040H3A	EFFLUENT WET END	1 PZ
1	400121	KT040HNA-1	DELIVERY CASING	1 PZ
2	400435	KT040H-3	SUCTION COVER	1 PZ
3	470185	KT040HNA-5	IMPELLER D.209	1 PZ
4	330624	KT040F-146	GASKET FOR FLANGE	1 PZ
5	470970	KT040-274	FIXED CUTTING	1 PZ
6	470980	KT040-275	ROTATING CUTTER	1 PZ
7	330685	KT040-146	GASKET FOR FLANGE	2 PZ
10	300773	GC02292	DOWEL M6X12 UNI5923/DIN913-A2	3 PZ
11	330380	OR01914	OR SEAL 228,19X3,53 OR4900 (AP)	1 PZ
12	310307	RLS02287	WASHER 8,5X16X2,5 (TO DRAW)	1 PZ
13	300892	RE01913	SPRING WASHER A 10 UNI1751-A2	4 PZ
16	330171	TFR02218	MECHANICAL SEAL BT-AR30-Q1Q1PFF	1 PZ
17	300216	VTT02291	SCREW M6X12 UNI5931/DIN912 A2-70	3 PZ
18	300207	VTT02582	SCREW M6X20 ISO 7380 A4-70	3 PZ
19	300064	VTT02296	SCREW M8X30 UNI5931/DIN912 A4-80	1 PZ
20	300240	VTT01923	SCREW M10X70 UNI5931/DIN912-A2	4 PZ
	574002	KC006522H132N3/L	ELECTRIC SUBMERSIBLE MOTOR	1 PZ
21	401749	KH/3-4	BEARING HOUSING	1 PZ
23	541029	KH/3-124	CARRIER FOR MECHANICAL SEAL	1 PZ
24	471072	K235H/3-22	OIL CHAMBER	1 PZ
27	471117	K235H200/3-260	MOTOR CASING	1 PZ
28	471155	K006522/200/3-262	STATOR	1 PZ
29	471094	K00652H/200/3-265	SHAFT WITH ROTOR	1 PZ
30	471077	K/3X-270	PROBE	1 PZ
33	310517	AE02411	CIRCLIP ART.012 72B	1 PZ
35	310556	AE0368	CIRCLIP 30 UNI7435 FOR SHAFT	2 PZ
36	350012	CSN01946	BEARING 6306-ZJ/C3(METAL CAGE)	1 PZ
37	350112	CSN01134	BEARING 3306/C3	1 PZ
38	350439	CT0034007	COMPLETE MALE 10PIN (TO DRAW)	1 PZ
39	310427	LCH0732	FEATHER KEY A6X6X30 (TOL.UNI6604)-C50	1 PZ
40	330383	OR01929	OR SEAL 71,44X3,53 OR174 (AP)	1 PZ
41	330553	OR0038284	OR SEAL OR 107,62X2,62 OR3425 (AP)	1 PZ
42	330380	OR01914	OR SEAL 228,19X3,53 OR4900 (AP)	1 PZ
46	310271	RLS01909	WASHER 30X42X2,5 DIN988 SEEGER TYPE SS	1 PZ
47	310554	AE0350	CIRCLIP 35 UNI7435 FOR SHAFT	1 PZ
48	310270	RLS01907	WASHER 14X18X1,5 DIN7603	6 PZ
49	310652	TF0038266	PLUG 1/4"GAS (TO DRAW)	3 PZ
50	M3VIT005	3VIT005-VIT	GROUNDING SCREW	1 PZ
51	330190	TFR01917	MECHANICAL SEAL BT-AR30-BXPFF	1 PZ
52	300193	VTT0038292	SCREW M5X10 UNI5931/DIN912-4.8	3 PZ
53	300239	VTT0038291	SCREW M10X25 UNI5931/DIN912-A2	4 PZ
54	300227	VTT02062	SCREW M8X25 UNI5931/DIN912-A2	2 PZ
55	300216	VTT02291	SCREW M6X12 UNI5931/DIN912 A2-70	3 PZ
56	300891	RE01912	SPRING WASHER A 6 UNI1751-A2	1 PZ
60	471028	CTA12X2,5/1-L10-255	COMPLETE FEMALE PIN 10X	1 PZ
62	541027	KH/3-118	OIL PUMP	1 PZ
63	330424	OR01798	OR SEAL 67,95X2,62 OR3268 (AP)	1 PZ
64	310517	AE02411	CIRCLIP ART.012 72B	1 PZ
65	300806	GC0038289	DOWEL M8X20 UNI5925/DIN915-A2	1 PZ
66	330557	OR0038431	OR SEAL OR 28,25X2,62 OR3112 (AP)	1 PZ
67	342000	MAG0038295	MAGNET N35 D.20X2	1 PZ
68	310270	RLS01907	WASHER 14X18X1,5 DIN7603	2 PZ
69	310652	TF0038266	PLUG 1/4"GAS (TO DRAW)	1 PZ
70	300807	GC0038290	DOWEL M5X16 UNI5923/DIN913-A2	2 PZ

72	341000	POL0038268	MEMBRANE (TO DRAW)	1 PZ
73	310330	RLS02211	WASHER 17,2X23X1,5	1 PZ
75	310220	DN0037496	EXAGONAL FLANGED NUT M12 WITH SERRATION UNI EN20898/2/DIN6923-A2	1 PZ
77	330556	OR0038287	OR SEAL OR 21,89X2,62 OR3087 (AP)	1 PZ
78	300057	VTE02559	SCREW M12X45 UNI5737/DIN931-A2	1 PZ
79	471074	K273/3-269	LIFTING EYE	1 PZ
80	350521	301S2208	INSULATING SHEATH VES25 20X120 (COVEME)	1 PZ
81	310608	FS0038425	CLAMP (TO DRAW)	1 PZ
998	996721	INSTRUCTIONS FOR K+ PLUG	ASSEMBLY	1 NR
1600	310829	TF0039074	PLUG (UNDERPLUG D.39.7 ESSENTA)	1 PZ
1610	310842	TF0039075	PLUG (UNDERPLUG D.40.6 ESSENTA)	1 PZ